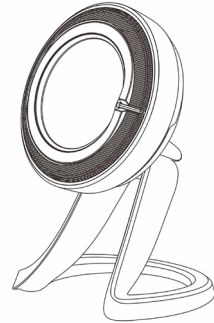
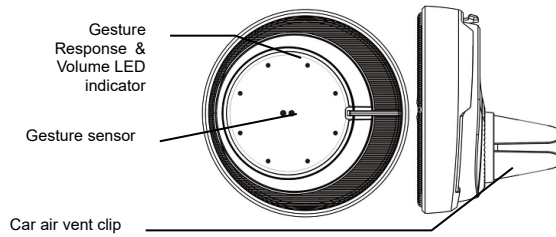


Wave1S User Manual

Hand Gesture Controller
Version 1.0



Introducing HPB Wave1S



Product Specifications

- Detect distance: 5~10 cm (from cover glass)
- Detect angle: 42 degrees (vertical & horizontal, from sensor center)
- BLE connection distance: Max. 6m
- Status LED indicator: BLE connected blue LED on, low power red LED
- Power source: 2 AAA Alkaline batteries, DC3V = 0.5A;
- Battery life: 3 to 4 months based on two hours connection per day
- Dimension: Dia. 65.9mm; Depth 21.6mm (without car air vent clip)
- Frequency : 2.4GHz Power : 1.5W

Package Contents

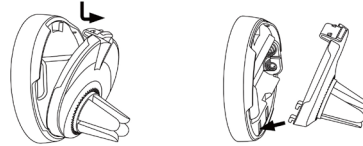
- HPB Wave1S • 2 x AAA Alkaline battery • User Manual • Stand

Attention

This device is designed to work with your Smart phone and BLE bluetooth-used car stereo or BLE bluetooth-used speakers. Please check the connection before use.

Get your Wave1S device ready

Insert two AAA Alkaline batteries, where the positive(+) aligns the (+) on the device. Put the lid on correctly as shown in the picture below. Blue LED will blink for 30 seconds. If not paired or connected, LED will be off.



Hereby · HPB HI-TECH CORP. declares that the radio equipment type [Wave 1S designation of type of RE] is in compliance with Directive 2014/53/EU. The full text of the EU declaration of conformity is available at the following internet address: 10F., No.308 Sec. 1, Neihu Rd, Taipei, Taiwan, R.O.C.

Federal Communication Commission Interference Statement

This equipment has been tested and found to comply with the limits for a Class B digital device, pursuant to Part 15 of the FCC Rules. These limits are designed to provide reasonable protection against harmful interference in a residential installation. This equipment generates, uses, and can radiate radio frequency energy and, if not installed and used in accordance with the instructions, may cause harmful interference to radio communications. However, there is no guarantee that interference will not occur in a particular installation. If this equipment does cause harmful interference to radio or television reception, which can be determined by turning the equipment off and on, the user is encouraged to try to correct the interference by one or more of the following measures:

- Reorient or relocate the receiving antenna.
- Increase the separation between the equipment and receiver.
- Connect the equipment into an outlet on a circuit different from that to which the receiver is connected.
- Consult the dealer or an experienced radio/TV technician for help.

FCC Caution:

This device complies with Part 15 of the FCC Rules. Operation is subject to the following two conditions: (1) This device may not cause harmful interference, and (2) this device must accept any interference received, including interference that may cause undesired operation.

FCC Radiation Exposure Statement:

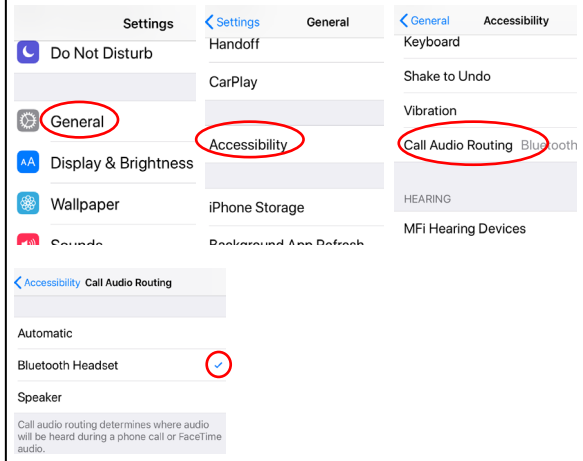
This equipment complies with FCC radiation exposure limits set forth for an uncontrolled environment. This equipment should be installed and operated with minimum distance 20cm between the radiator & your body.



For iPhone

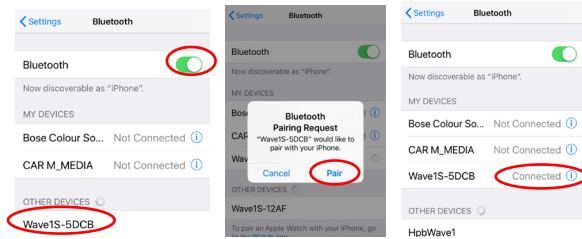
Car Audio Routing Setting

To set up your phone, go to Settings>General>Accessibility>Call Audio Routing, select "Bluetooth Headset".



BIE bluetooth-pairing

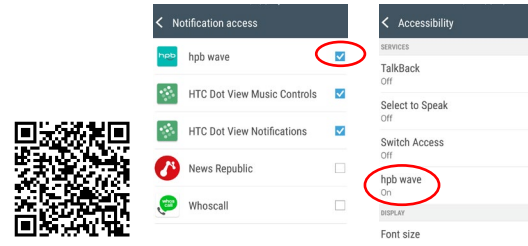
1. Go to Settings of your iPhone and turn on "Bluetooth". iOS system will scan devices automatically. At "Other devices" you may find several Bluetooth-connected devices, select "Wave1S-xxxx".
2. System will pop out a pair request dialog box and choose "Pair". Wave 1S will be paired and connected. Blue LED will be on.
3. Please double check the "Bluetooth", "Wave1S-xxxx" is connected in your "My Devices" list.



For Android Phone

Install APP & related settings

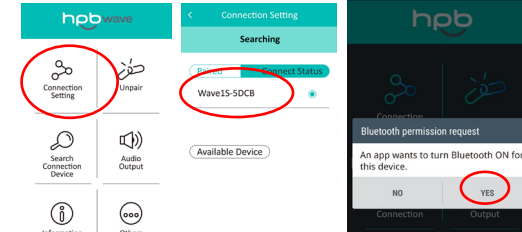
- Scan the QR code below or go to your "Play Store" for "HPB Wave 1S".
1. Wave" APP installation.
 2. Upon completion, click "Yes" to turn on "Bluetooth".
 3. In the "Settings>Sound & Notification>Notification access", select "hpb wave".
 4. In the "Settings>Accessibility", turn hpb wave to "ON".



For Android user : if you have several bluetooth-connected speakers, you must choose one of them.

BLE bluetooth-pairing

Start hpb wave APP. Click on "Connection Setting" to search for available device "Wave 1S-xxxx" and select it.

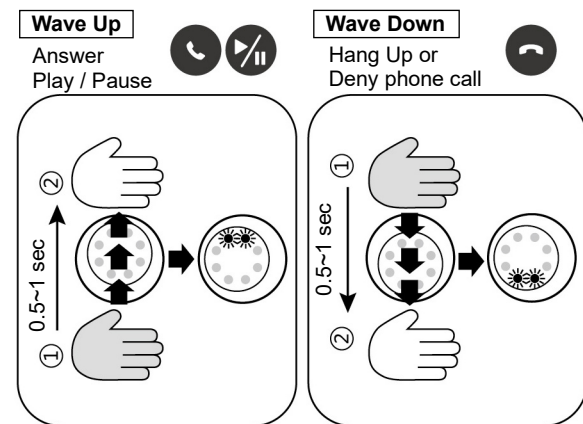


More functions on hpb wave App:

- Unpair: To remove the device, click "unpair".
- Search Connection: Click to search available device nearby.
- Audio Output: There are options for your choice. "Mobile Phone": audio out from your mobile phone "Mobile Speakerphone (voice only)": audio out you're your mobile phone speaker "Other devices": It will go to phone system to allow you to connect your target BT devices.

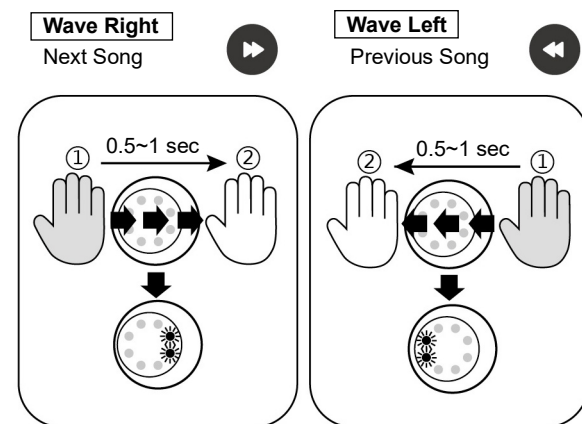
Operation Instructions

Wave hand from position 1 to 2 within 0.5~1 second

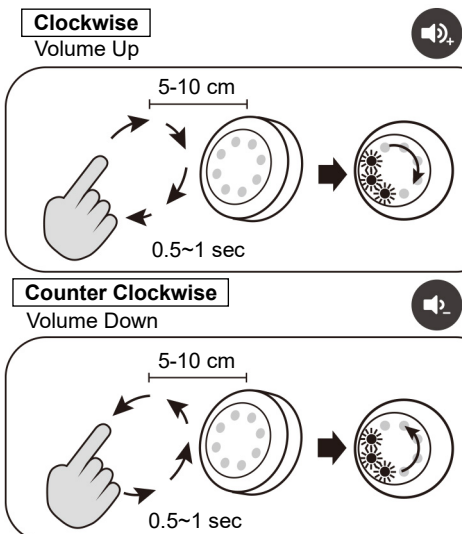


Operation Instructions

Wave hand from position 1 to 2 within 0.5-1 second



Operation Instructions



Warranty Card

This Limited Warranty is certified that HPB HITECH CO. LTD. is guaranteed for free repairs up to 12 months from the date of purchase against assembly / manufacturing faults. This warranty does not cover defects resulting from improper or unreasonable use or maintenance; failure to follow operating instructions; accident; excess moisture; insects; lightning; power surges; connections to improper voltage supply; unauthorized alteration or modification of original condition; damages caused by inadequate packing or shipping procedures; loss of, damage to or corruption of stored data; product that requires modification or adaptation to enable it to operate in any country other than the country for which it was designed, manufactured, approved and/or authorized, or repair of products damaged by these modifications; and products purchased from unauthorized dealers. This warranty period is effective from 30 days after manufacture month if the warranty card is illegible, removed, altered or damaged. HPB or HPB authorized distributor will provide quotation to consumer first for any service demand exceed warranty period. Service demand will conduct after received consumer agreement.

Seal:	Date of Purchase:
-------	-------------------

Maintenance & Service

H.P.B. Hi-Tech Corp.
10F., No.308 Sec. 1, Neihu Rd, Taipei, Taiwan, R.O.C.
Tel: 886-2-26581566 Fax: 886-2-26581567 Email: service@hpbhitech.com